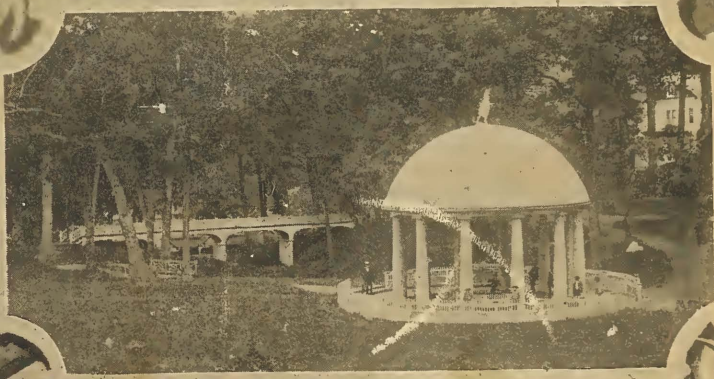


F 249  
.W6 G67  
Copy 1

GREEN BRIER

WHITE  
SULPHUR



1901  
ES SPRINGS



Class F 249

Book .W 6 G 7











# The Historic White Sulphur Springs,

Greenbrier County, W. Va.

HARRINGTON MILLS, MANAGER.

Season of 1901, June 15 to September 15.



AMONG the summer resorts in the United States, the Greenbrier White Sulphur Springs is not only one of the largest and best known, but one about which cluster the greatest variety of historical associations. For nearly a century it has attracted the best elements of Southern society, and for that reason has also brought many visitors from the North, who find keen interest in mingling with unfamiliar types, which have for them the attraction of novelty as well as of personal charm. For many years the gatherings at the White Sulphur were characteristic of the Old South, and now that the New South has reached a degree of wealth and development which have created another social order, it is again the center of interest for the whole country during each recurring summer. In the North there are a number of great watering places which divide the honors of being representative places of recreation, but there is only one Greenbrier White Sulphur Springs. One has but to glance at the list of guests in recent summers to be convinced that it is even more distinctly a national watering place than ever, and draws its support from every part of the country, and from all the varied factors which go to make up the most attractive features of American life.

The most casual visitor to the White Sulphur Springs is struck at once by its distinctly Southern characteristics, its quaintness, its space and freedom, and a certain prodigality of appointments, which suggest old-fashioned luxury and ease; but while none of its distinctive character has been sacrificed, the various improvements demanded by modern ideas have converted it into a watering place containing all the usual conveniences of a first-class resort.





VIEW OF MAIN HOTEL FROM GEORGIA ROW.

The management for the coming season has again been entrusted to **Mr. Harrington Mills**, one of the proprietors of **The Grafton, at Washington, D. C.** Mr. Mills will have a thoroughly competent and well organized staff of assistants, and visitors may feel sure of a careful administration. Besides retaining, as far as possible, all of the old employees, who have made up one of the most attractive features of the "White" in former seasons, he will endeavor to improve upon the service with such additions and changes as will best inure to the comfort of the guests.

The White Sulphur does not pretend to, nor charge for exceptional display, but has commodious, well-cared-for rooms, a clean and efficient service, a good table, a choice stock of wines, a band of fifteen musicians, ample livery accommodations, and all the essentials of a first-rate watering place. The hotel has elevator service, gas and electric lights, electric bells, etc. In addition to the central hotel building there are about a hundred cottages, arranged in rows about the grounds surrounding the hotel, which are very convenient for families or parties of friends who wish to be secluded from the gayer and more active life.

For invalids the sulphur and chalybeate water, the hot sulphur baths, and the seclusion of the cottages offer their well-known advantages; for children, the lawn, with its great expanse and ample shade, affords unusual attractions and security from all danger, while those who seek gaiety or social enjoyment will always find it among the throngs that fill the large parlor, the great ball-room and the ample porches of the Grand Central Hotel. If not satisfied with this, they can give their own private entertainments in the café, or indulge in the pleasures of a lawn party under the wide-spreading oaks.

### Improvements.

The management of the Springs have made a large outlay for the construction of a new **water supply and sewerage system**, which, it is believed, will ensure the best sanitary conditions, besides contributing materially to the comfort and convenience of the guests. A number of **private baths and toilets** have been added to the **cottages** of Florida and Georgia Row. **Acetylene Gas** has been introduced for lighting the **hotel, cottages and lawn**. In addition to the gardens, from which a plentiful supply of fresh vegetables is furnished, a **DAIRY** will be maintained with a fine herd of **Jersey** cows. Parents may be assured of having the best quality of fresh milk every day for the children.



VIEW OF MAIN HOTEL FROM COLONNADE ROW.



## The Representative Resort of the South.



THESE SPRINGS are situated in the famous Springs region, directly on the main line of the Chesapeake & Ohio Railway, and upon the western slope of the Great Appalachian Mountains. The elevation above tide water is 2000 feet; the immediate surrounding mountains something more than 3500 feet. The temperature of its waters is 62° Fahrenheit, from which they do not vary during the heat of summer or the cold of winter.

The mean temperature at White Sulphur from the 15th of April to the 15th of November is about 63° Fahrenheit, or the same as the mean annual temperature at Cairo, Naples, Nice and Madeira.

The Spring yields more than thirty gallons a minute; and it is a remarkable fact that this quantity is not perceptibly varied during the longest spells of wet or dry weather. The quantity and temperature of the Spring being uniform under all circumstances, give a confidence, which experience has verified, of its uniform strength and efficiency.

### Analysis of the Water.

From the report of Prof. Hayes, of Boston, one gallon contains 19.1 cubic inches of gas, having the proportion of:

Nitrogen Gas . . . . .	4.680
Oxygen Gas . . . . .	.498
Carbonic Gas . . . . .	11.290
Hydro-Sulph. Acid . . . . .	.271

Fifty thousand grains of this water contain 115.1 grains of saline matter, consisting of:

Sulphate of Lime . . . . .	67.168
Sulphate of Magnesia . . . . .	30.364
Chloride of Magnesium . . . . .	.859
Carbonate of Lime . . . . .	6.060
Organic Matter (dried at 212°) . . . .	3.740
Carbonic Acid . . . . .	4.584
Silicates (Silica 1.24, Potash .18, Soda .66, Magnesia, and a trace of Oxide of Iron).	2.960

The water is for sale by all druggists, or will be shipped from the Springs direct at the following prices, f. o. b. White Sulphur: One case of 24 quarts, \$5; one case of 48 pints, \$5.50.



A COTTAGE IN SOUTH CAROLINA, TANSAS AND FLORIDA ROWS.



## **Therapeutical Effect of the Water.**

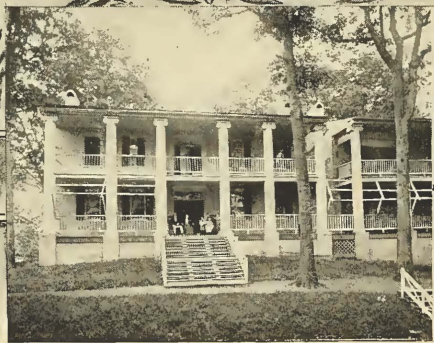
The White Sulphur Water acts on the kidneys, bowels, liver and skin. As a diuretic, its effects are very soon apparent, but it usually requires some days before it produces a decided action on the bowels. Its operation on the liver, too, may not be manifest for some time, and where there is much torpidity of this organ some auxiliary means is required. Its effect upon the skin is very apparent, though not immediate. But the most decidedly controlling effect of the water over diseased action, and that which more than any other gives its highest and most valuable character as a remedy, is its alterative power, or that peculiar action by which it effects salutary changes or alteration in the blood, in the various secretions and upon the various tissues of the body.

## **Drinking the Water.**

No general directions can be given for the internal use of the water. The hours, the quantity, and the period for which the water should be drunk depend upon the individual requirements of the case, and should be ascertained by consulting a physician experienced in the use of the waters. The action of the water is more intense if taken fresh from the Spring; it is more stimulating, more readily absorbed, and produces its effect more promptly on certain organs than the water which has stood some time after being taken from the Spring; but in some cases the use of the latter is to be preferred, and is thus frequently prescribed.

Observance of prudence and moderation in both eating and drinking is essential to obtain the greatest benefit from the water, and occasionally its action has to be either modified or increased by the use of medicine, or by the addition of a little salt to each glass.

Independently of the benefit to be derived from the waters, a better situation for a residence of invalids and delicate persons during the spring, summer and fall months can scarcely be imagined. They have the advantage of a most salubrious and invigorating air, and the most agreeable temperature—cool at morning and evening, and at no time oppressively warm.



BRUCE COTTAGE.

A COTTAGE IN COLONNADE ROW.

PATTERSON COTTAGE.

## **Baths at the White Sulphur.**

The water used for bathing at the White Sulphur flows from the Sulphur Springs from which the visitors drink. The analysis of this water shows it to contain about one hundred and fifty grains of active medicinal salts to the gallon, and so far as the medication of the waters can favorably affect the bath for which they are used, the White Sulphur baths have the strongest claim to confidence, inasmuch as no other waters in America that are used for bathing are more highly impregnated with mineral salts.

These baths in connection with the drinking of the Sulphur Waters, although not required in every case, are a matter of the utmost importance in a large number of cases in aiding to produce the best effect of the waters.

The proprietors of the Springs have recently greatly enlarged and so remodelled their bathing establishment as to make it in every respect satisfactory, it is believed, to those who may desire to avail themselves of its use.

The bathing-rooms are spacious, airy and comfortable, and have been supplied with porcelain-lined tubs. In addition to the usual tub baths, there are douche baths for the application of streams of hot or warm water to local parts of the body, and rooms have been set apart and arranged for receiving sweating baths.

Those desiring to use hot sulphur baths, the effects of which are pronounced, should, before taking them, be instructed under a proper knowledge of their case by the resident physician, as such baths, to be used safely and efficaciously, must be used with careful reference to their temperature, the state of the system when employed, and the length of time the bathers remain in them.

## **Swimming Pool.**

In addition to the baths there is a well-equipped swimming pool, thirty by ninety feet. The dressing-rooms and lockers are large and airy, giving the very best accommodation to those who delight in this most healthful exercise.



BALTIMORE AND PARADISE ROWS FROM THE HOTEL PORCH.



## **Diseases to which the Water is Applicable.**

The White Sulphur Springs water, by long experience, has been found eminently beneficial in all diseases due to abnormal conditions of the blood, or to derangement of the stomach, bowels, liver, kidneys, bladder, skin, or nervous system.

It is a specific in dyspepsia, chronic diarrhœa, costiveness, jaundice, and torpidity of the liver.

It is of great value in nervous affections, such as congestion of the brain, paralysis, neuralgia, and sciatica.

It often effects cures in cases of hay fever, chronic nasal catarrh, asthma, and bronchitis, and when the hot sulphur baths are used in connection with the drinking water malaria, gout, and all forms of rheumatism are eradicated from the system.

The water has also been proved highly efficacious in many diseases incident to females, and a valuable adjuvant to the treatment of inebriates and opium eaters.

## **Chalybeate Springs.**

About forty rods from the White Sulphur Springs is a Chalybeate Spring, in which the iron exists in the form of carbonate of iron, the mildest, least offensive, and ordinarily the most valuable form in which ferruginous waters are found. For the last twenty years this water has been considerably used by the class of visitors whose diseases require an iron tonic, and its effects have realized the rational hopes that were indulged in it.

## **Resident Physician.**

Dr. Berwick B. Lanier, of 25 West Chase Street, Baltimore, Md., will again be the Resident Physician.



BALTIMORE ROW.

## Society and its Amusements.



There is no other place where one may get so full a view into the social life of the South as at White Sulphur, the resort of the gallantry and the beauty of so many generations. The buildings are in the old colonial style, and in their spacious halls or on their broad piazzas one experiences all that has given Southern society its distinctive character.

The parlor is a magnificent room, half as large again as the celebrated East Room in the President's Mansion. The ball-room is of the same dimensions as the parlor. The dining-room is more than 300 feet in length, and seats 1200 persons.

During the season, besides the nightly hops, there are several grand, fancy and masquerade balls, which add to the amusement of the guests.

Music will be furnished by an orchestra of fifteen pieces.

Other amusements will be found in the games of bowls, billiards, tennis, cards, etc., while the lovers of out-of-door life will always find a pleasant ride or drive through the valley or over the mountains, with lovely views to reward them at every turn. Within the beautiful sixty-acre lawn will be found slated bicycle paths. Those who seek sport can find guides and hunt for pheasants in the foot-hills, or enjoy the bass fishing in the beautiful Greenbrier river. Those who seek trout will have further to go, but good sport can be had by those who wish it, using the White as the base of their movements.

## Scenery.

Nature has contributed the most charming surroundings of scenery to the White Sulphur. Forest, vale and mountain are here in rare and unique combination, presenting at every turn new views of the picturesque, the beautiful, and the grand, sufficient for the gratification of every taste.





GEORGIA ROW.



The first thing that is likely to attract the visitor, and especially from the heated and dusty city, is the vast lawn of green, velvety turf, shaded by noble forest oaks, luxuriant sugar maples and venerable pines. Under these monarchs of the forest wild flowers are seen in profusion and in great variety, from the tiny violet to the modest laurel and the gaudy rhododendron. Next the eye wanders through the curving walks and drives, intermingling, but all tending to the great center of attraction, the Grand Old Fountain, shaded by ancient oaks, and daily pouring from its exhaustless resources more than 40,000 gallons of healing waters.

About the "Old White," too, there is, in a particular sense, an immensity of sky and air. Here are no unwholesome vapors, no malaria; no noxious dews poison the early morn or shadowy twilights.

A striking feature in the scenery is the surrounding mountains. "Kate's," with its old family legend, is one mile to the south, and 3500 feet above the sea; "Greenbrier," the same distance to the west, and of equal altitude. To the southwest, and three miles distant, are the mountains known as "White Rock." On the summit of these mountains is discovered a striking resemblance to a human figure of gigantic size, which has been the wonder and admiration of all visitors, and which has been named the old "Titan," who in solitary grandeur keeps guard like a giant over the White Sulphur.





FIRST VIRGINIA ROW.



PARADISE ROW.



CHILDREN'S FANCY DRESS BALL.



MORNING GERMAN AND LAWN PARTY.



WILLS, PHOTO.



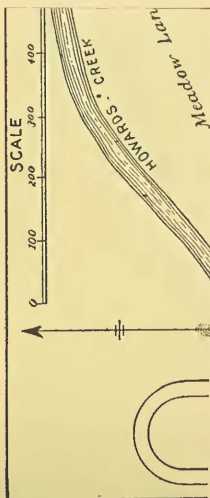
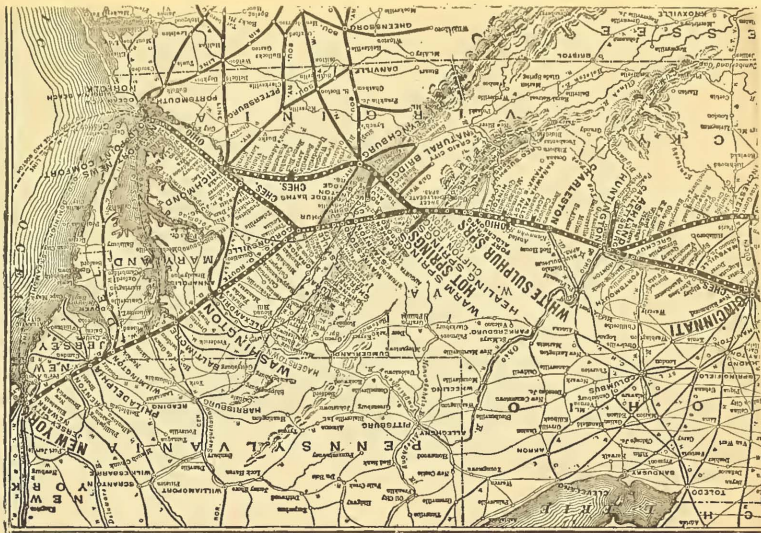
ONE OF THE MANY EVENING GERMAN.

THE GERMAN LUNCH CLUB IS ONE OF ITS MOST ATTRACTIVE FEATURES



METHODIST CHURCH.

ST. CHARLES' CATHOLIC CHURCH.  
ST. THOMAS' EPISCOPAL CHURCH.



St. Louis, Mo. . . . .	67
Cincinnati, O. . . . .	38
Louisville, Ky. . . . .	4
Memphis, Tenn. . . . .	77
Nashville, Tenn. . . . .	60
Chattanooga, Tenn. . . . .	58

**Special Excursion Rates** are sold 30, good for RETURN PASSAGE on or before

**Special Week-End Tickets**, for Baltimore, Chesapeake & Ohio Railway, including

**Pullman Sleepers and Dining Cars**

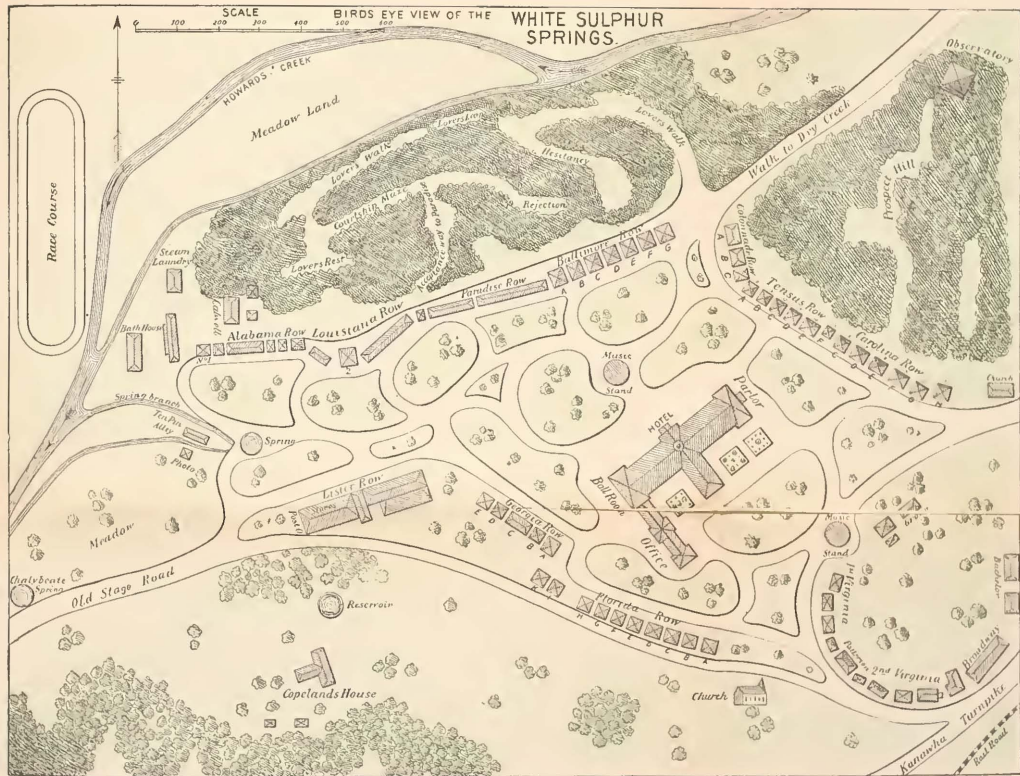
**Round Trip Tourists' Tickets** for sleeping car reservations, etc., apply for more, the principal ticket offices through

New York: 3  
Philadelphia: 3  
Washington: 3  
Richmond: 8  
Cincinnati: F  
Louisville: 25  
St. Louis: C  
Chicago: 234  
W. S.

JNO. D. POTTS, A. G. P. A., C. & G.





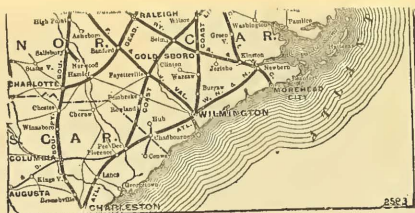


# IO RAILWAY

G LINES.

E TO THE

LPHUR SPRINGS.



LY ON MAIN LINE OF C. & O. RAILWAY.

ESTIBUED TRAINS

DINING CAR SERVICE ARRIVE AND DEPART AT SEASONABLE HOURS.

nd Distance Rates from Principal Cities

TE SULPHUR SPRINGS.

ES.	HOURS.	ROUND TRIP FARE.	FROM	MILES.	HOURS.	ROUND TRIP FARE.
75	21.30	\$32.00	New Orleans, La. . . .	1080	37.30	\$45.25
42	13.30	22.00	Mobile, Ala. . . . .	1020	32.30	41.00
51	11.10	18.00	Montgomery, Ala. . . .	840	27.10	36.70
26	21.00	24.60	Atlanta, Ga. . . . .	665	20.30	27.70
55	8.50	14.00	Macon, Ga. . . . .	714	29.30	29.70
12	7.10	12.00	Jacksonville, Fla. . . .	785	26.30	41.50
59	18.05	27.80	Savannah, Ga. . . . .	646	22.00	32.70
95	19.05	29.65	Charleston, S. C. . . .	623	27.00	29.55
54	9.55	15.00	Augusta, Ga. . . . .	589	24.00	27.70
17	13.05	17.00	Norfolk, Va. . . . .	315	13.30	13.00
94	25.40	33.10	Old Point, Va. . . . .	312	13.00	13.00
93	25.05	26.70	Richmond, Va. . . . .	227	7.15	10.00
38	22.00	25.70				

d from principal cities to WHITE SULPHUR SPRINGS from June 1 to September before October 31.

eads of families, are sold during the season at HALF RATES from the cities on ing Washington, Louisville and Cincinnati.

Cars on all trains.

o the Springs will be on sale during the summer. For tickets, baggage checks, at Pennsylvania R. R. ticket offices in New York, Philadelphia and Balti- oughout the country, or any of the following C. & O. agencies:

62 and 1354 Broadway.

and Baltimore: Offices Pennsylvania Railroad.

513 Pennsylvania avenue and 609 14th street.

99 East Main and 903 Main streets.

ifth and Walnut streets.

3 Fourth avenue.

rnier Broadway and Chestnut streets.

Clark street.

BRONSON, A. G. P. A., C. & O. Ry.,

Washington, D. C.

O. Ry.,

Richmond, Va.

C. B. RYAN, A. G. P. A., C. & O. Ry.,

Cincinnati, O

V. FULLER, G. P. A., C. & O. Ry.,

Washington, D. C.

Entire Property Lighted by Acetylene Gas.  
Passenger Elevator in Main Building.  
The Famous Hot Sulphur and Plunge Baths.  
Cafe Remains Open until After the Arrival of  
Evening Trains.

## Rates at White Sulphur for 1901

WILL BE ACCORDING TO LOCATION AND  
STRICTLY ADHERED TO.

---

ACCOMMODATIONS, WITH PRIVATE BATH, \$90 TO \$100 PER MONTH.

Per Month of 28 Days, \$50, \$65 and \$75.

Per Week, \$15, \$17.50 and \$21.

Per Day, \$3, \$3.50 and \$4.

TO YOUNG MEN A SPECIAL RATE OF \$12.50 A WEEK, OR \$40 PER MONTH OF 28 DAYS.

Children under twelve years, nurses and servants, \$32.50 per month of 28 days.

Children occupying seats in main Dining-Room will be charged adult rates.

The following stores will be located within the grounds for accommodation of guests:

RYLAND & RANKIN, of Lynchburg, Va., Jewelers.

H. B. WILLS, of Richmond, Va., Photographer.

WOODSON & MORGAN, General Merchandise and Druggists' Sundries.

Telegraph Office, Post Office and Express Office on the grounds.

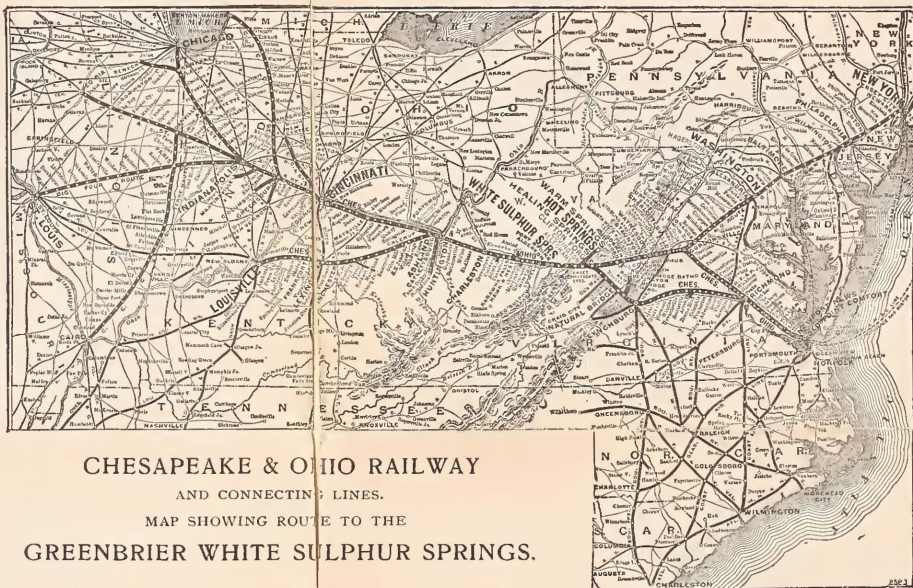
Tailors, Confectioners, Florists, Manicures, Hair-Dressers supply their respective needs.  
Slated Bicycle Paths.

CORRESPONDENCE SOLICITED.

Address until June 1, "THE GRAFTON," Washington, D. C.

HARRINGTON MILLS, Manager.





## CHESAPEAKE & OHIO RAILWAY

AND CONNECTING LINES.

MAP SHOWING ROUTE TO THE

GREENBRIER WHITE SULPHUR SPRINGS.

IMMEDIATELY ON MAIN LINE OF C. & O. RAILWAY.  
VESTIBULED TRAINS

WITH PERFECT PULLMAN AND DINING CAR SERVICE ARRIVE AND DEPART AT SEASONABLE HOURS.

Hours and Distance Rates from Principal Cities  
TO WHITE SULPHUR SPRINGS.

FROM	MILES.	HOURS.	ROUND TRIP FARE.	FROM	MILES.	HOURS.	ROUND TRIP FARE.
Boston, Mass. . . . .	775	21.30	\$32.00	New Orleans, La. . . . .	1080	37.30	\$45.25
New York City . . . . .	542	13.30	22.00	Mobile, Ala. . . . .	1020	32.30	41.00
Philadelphia, Pa. . . . .	451	11.10	18.00	Montgomery, Ala. . . . .	840	27.10	36.70
Pittsburg, Pa. . . . .	826	21.00	24.60	Atlanta, Ga. . . . .	665	20.30	27.70
Baltimore, Md. . . . .	355	8.50	14.00	Macon, Ga. . . . .	714	29.30	29.70
Washington City . . . . .	312	7.10	12.00	Jacksonville, Fla. . . . .	785	26.30	41.50
Chicago, Ill. . . . .	659	18.05	27.80	Savannah, Ga. . . . .	646	22.00	32.70
St. Louis, Mo. . . . .	695	19.05	29.65	Charleston, S. C. . . . .	623	27.00	29.55
Cincinnati, O. . . . .	354	9.55	15.00	Augusta, Ga. . . . .	589	24.00	27.70
Louisville, Ky. . . . .	417	13.05	17.00	Norfolk, Va. . . . .	315	13.30	13.00
Memphis, Tenn. . . . .	794	25.40	33.10	Old Point, Va. . . . .	312	13.00	13.00
Nashville, Tenn. . . . .	693	25.05	26.70	Richmond, Va. . . . .	227	7.15	10.00
Chattanooga, Tenn. . . . .	588	22.00	25.70				

**Special Excursion Rates** are sold from principal cities to WHITE SULPHUR SPRINGS from June 1 to September 30, good for RETURN PASSAGE on or before October 31.

**Special Week-End Tickets**, for leads of families, are sold during the season at HALF RATES from the cities on Chesapeake & Ohio Railway, including Washington, Louisville and Cincinnati.

**Pullman Sleepers and Dining Cars** on all trains.

**Round Trip Tourists' Tickets** to the Springs will be on sale during the summer. For tickets, baggage checks, sleeping car reservations, etc., apply at Pennsylvania R. R. ticket offices in New York, Philadelphia and Baltimore, the principal ticket offices throughout the country, or any of the following C. & O. agencies:

New York: 362 and 1354 Broadway.  
Philadelphia and Baltimore: Offices Pennsylvania Railroad.  
Washington: 1513 Pennsylvania Avenue and 609 14th Street.  
Richmond: 299 East Main and 903 Main Streets.  
Cincinnati: Fifth and Walnut Streets.  
Louisville: 253 Fourth Avenue.  
St. Louis: Corner Broadway and Chestnut Streets.  
Chicago: 234 Clark Street.

W. S. BRONSON, A. G. P. A., C. & O. Ry.,

Washington, D. C.

JNO. D. POTTS, A. G. P. A., C. & O. Ry.,

Richmond, Va.

C. B. RYAN, A. G. P. A., C. & O. Ry.,

Cincinnati, O.

H. W. FULLER, G. P. A., C. & O. Ry.,

Washington, D. C.



*The*



CONNECTICUT AVENUE,  
WASHINGTON.

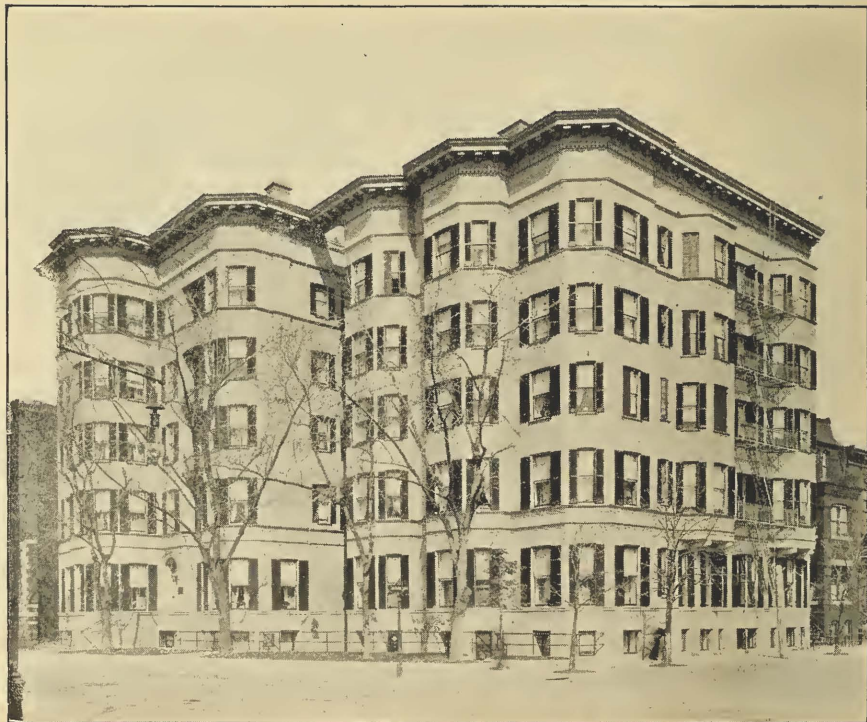
—  
GEO. A. MILLS & SON,  
PROPRIETORS.



HARRINGTON MILLS,  
MANAGER,

— Greenbrier —

White Sulphur Springs.















LIBRARY OF CONGRESS



0 014 434 094 2

